

**EXXON OIL CO. CHOOSES SYSTEM 2001  
FOR CORPORATE HEADQUARTERS BUILDING!**

**800 BELL STREET  
HOUSTON, TEXAS**

**Right in the Heart of bustling Down-  
Town Houston, sits the Corporate  
Headquarters of one of the Largest Oil  
Companies in the World, and the latest  
SYSTEM 2001 Convert!**



When it came time to consider re-roofing their hi-rise corporate headquarters building in Houston, Texas, The Exxon Oil Company went to **French Engineering Co.**, and its owner **Mr. Warren French, PE.**, for recommendations on the type of roofing to use for this installation.

Mr. French contacted **Tom Kelly, President of 2001 Company**, for more information on System 2001. With its Patented, and Proven Air-Seals, and Vacuum-Transfer Technology, System 2001 was a natural for a Hi-Rise application such as this.



**Coatings Applications & Waterproofing** was the 2001 Co. Applicator that was awarded the re-roofing contract.

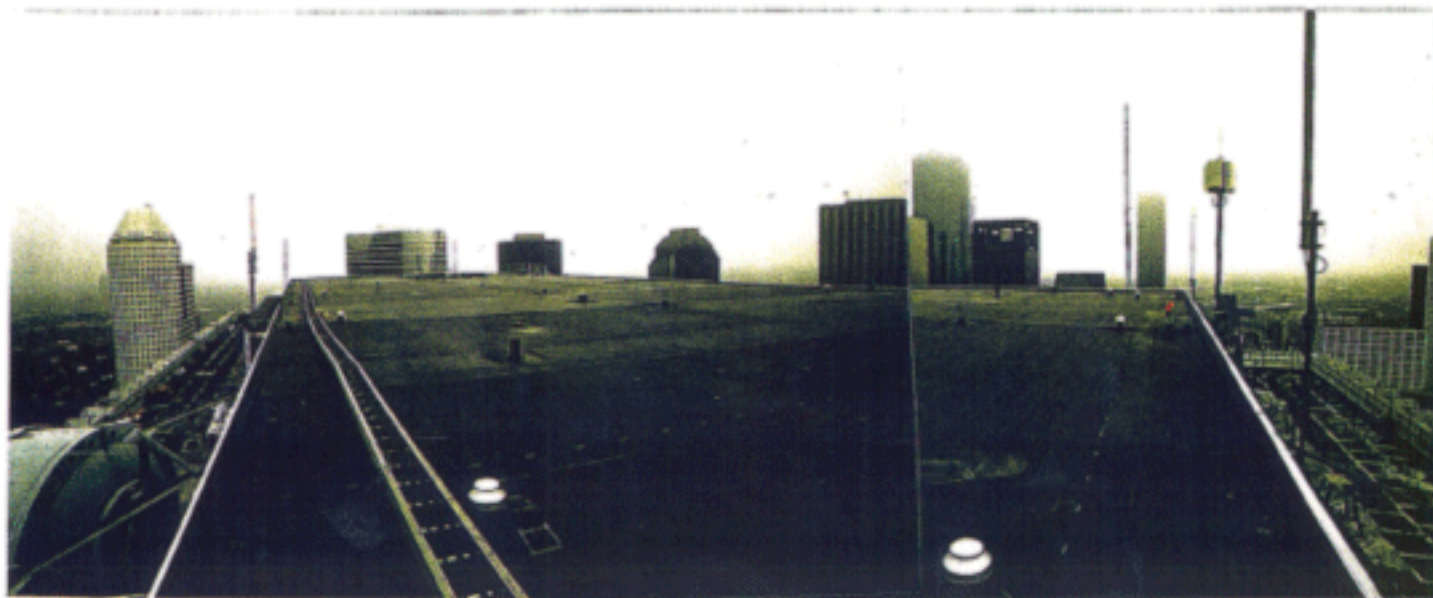
The logistics of doing a tear-off on a hi-rise building were compounded by the fact that both the removed materials, and the replacement roofing items had to be manually moved to, and from the freight elevators on the 44<sup>th</sup> floor. **The roof however is on the 47<sup>th</sup> floor level!**



The BUR was removed down to the Lightweight Concrete, which was installed over a structural concrete deck. Then new Polyisocyanurate insulation was installed, and over-laid with **Georgia Pacific Dens-Deck**. The perimeter, however, was **OSB Waferboard, over 2001 Co. Air-Seal Rope, and then Mechanically Attached to the Concrete Deck!**

**The same details were used at ALL penetrations.**

**The 2001 Company Premium EPDM membrane was then Adhered ONLY to the OSB, The remainder of the roof was LOOSE LAID !**



**2001 Company One-Way Equalizer Valves were strategically installed around the Perimeter of the roof so as to take Maximum Advantage of the Low Pressure Wind Vortices that are created as the wind passes over a roof surface. This Phenomenon is Magnified due to Building Height! Equalizer Valve placement was analyzed, and specified by a MIT computer program.**

After the EPDM roof stabilizes, a White Hypalon Coating will be applied to the entire surface of the rubber membrane.

Both the Consulting Engineer, **Mr. Warren French**, and the Corporate entities at **Exxon Oil Company** are extremely pleased with the **System 2001 Roof** installation done by Coatings Application & Waterproofing, and look forward to a long and worry-free life of the roof.

For more information on This or any other **System 2001 Roofing** application Contact:

